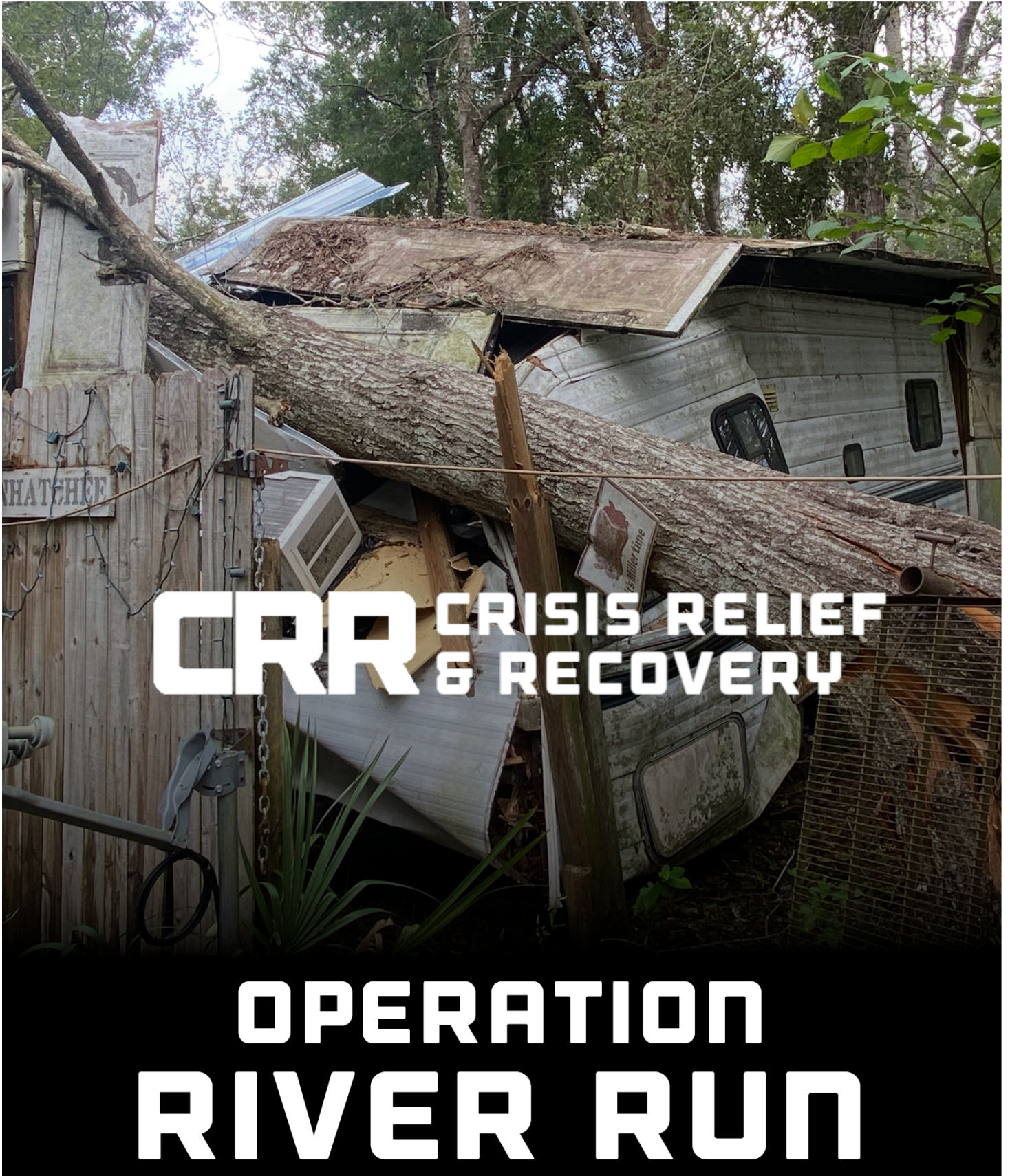


IMPACT REPORT



CRR CRISIS RELIEF
& RECOVERY

**OPERATION
RIVER RUN**

OPERATION RIVER RUN INITIAL IMPACT REPORT

STEINHATCHEE FLORIDA

COVERS THE PERIOD OF AUGUST 30 - OCTOBER 22, 2022

HURRICANE IDALIA

Hurricane Idalia was a powerful Category 4 hurricane that caused significant damage across parts of the southeastern United States. Hitting the Florida Big Bend region at a Category 3 hurricane on August 30, 2023, Idalia continued to have hurricane-strength wind as it moved through Northern Florida and crossed into Southeast Georgia; it then pushed into the Carolinas as a tropical storm.

Idalia made landfall in Keaton Beach, with sustained winds of 125 mph (200 km/h), causing severe damage in the area. Water levels near Cedar Key reached a record 6.8 ft, and the storm surge water level was at 8.9 feet. On August 31, Idalia emerged into the Atlantic, where it transitioned into a post-tropical cyclone that same day.

At least 278,000 customers lost power and as of September 4, insured losses were estimated at \$3.5 billion USD. Idalia caused significant damage to thousands of homes, businesses, and other infrastructure along its inland path, primarily in Florida, where winds and the resulting floodwaters were highest. Idalia was the most powerful hurricane to hit Florida's Big Bend region since the 1896 Cedar Keys hurricane.



Operation RIVER RUN IMPACT SUMMARY

Operation RIVER RUN, using a eight-person leadership team over the span of two weeks, assessed over 125 homes, mobilized 133 volunteers who contributed over 1800 volunteer hours, and completed projects on 61 homes with an estimated value of \$784,100*. We then facilitated, trained and continue to advise long-term local partners to oversee the rebuilding process for this area, while bringing together national and regional resources.

* via crisiscleanup.org report "Estimated Value of New, Claimed, and Closed Cases", October 22, 2023

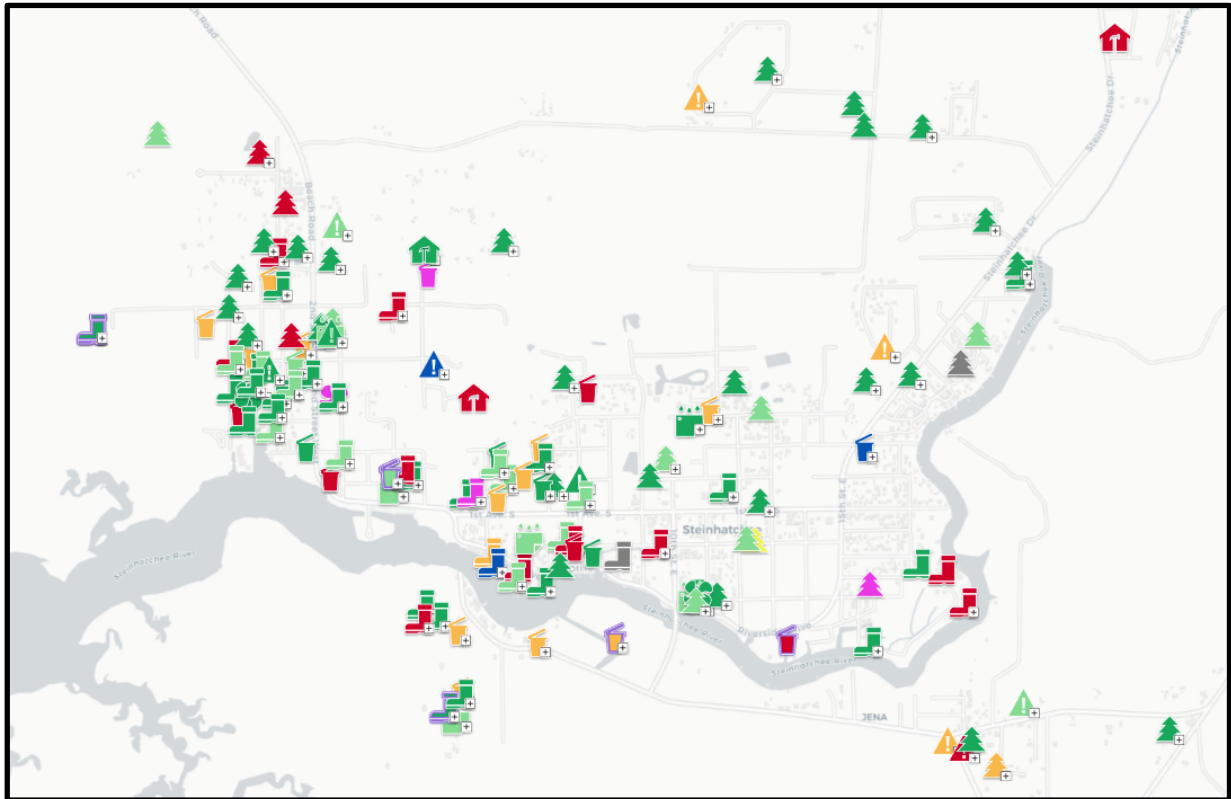
One of our core values is "Power through Partnership", which allows us to be a small part of a huge impact. The results reflected in this report include our efforts to assess and facilitate work in the community plus the contributions of countless volunteers who came as local individuals, and members of other organizations who answered the call including All Hands and Hearts and Adventures in Missions. The outpouring of support from neighbors and local businesses was tremendous and we couldn't have done it without the help of: Anna King, Nina Johnson and Tom Muscher, Jeff and Beth Morrill, Danielle Norwood, Paul Nawlin and Ron Bloom, who is currently leading the effort of the community long term recovery group. Of special note is the Steinhatchee Projects Board, which provided the Steinhatchee Community Center for our operations center and to Jeff and Beth Morrill who provided their "Cabins on the Corner" for our team to stay. CRR is grateful for the partnership of others, through their sacrifices they help us to create exponential impact for Steinhatchee.

DAMAGE ASSESSMENT

The first step of a disaster relief response is to assess the extent and magnitude of the damage. This allows Crisis Relief and Recovery to raise awareness of the “ground truth” of a disaster, alert the world to the extreme needs of the community, and mobilize resources in order to combat the challenge.

Cases Reported on crisiscleanup.org for the towns of Steinhatchee and Jena

(colors reflect current status)



It is estimated that Crisis Relief and Recovery awareness campaigns through word of mouth, community leaflets, door hangers, and social media, **our team enabled another 145 entries in crisiscleanup.org** – which drove attention, additional work teams, and facilitated work completion in the towns of Steinhatchee and Jena.



CRR CRISIS RELIEF & RECOVERY

STRATEGIC DISASTER RELIEF

Crisis Relief and Recovery then facilitates, coordinates, and gets those resources “into the fight.” During Operation RIVER RUN in Steinhatchee, we were able to provide:

STRATEGIC RESOURCES



- Tools
- Heavy Equipment
- Chainsaw Teams
- Disaster Assistance
- Fans
- Dehumidifiers
- Shower Trailers
- Solar Power Micro-grids
- Air Mattresses/Beds
- Sprayers
- Mold Sanitization Kits

STRATEGIC PARTNERS



footprintproject.org



volunteerflorida

All Hands and Hearts

LOCAL VOLUNTEERS



133 Volunteers Activated*



1848 Volunteer Hours*

*Sep 2 - Sep 16 only

CRR CRISIS RELIEF & RECOVERY

EVERY PLACE BETTER

CRR works to create a long term recovery plan and through partnerships with other organizations see a community fully recover from disaster. Below are some the plans in place as of 10.22.23

Steinhatchee Community Long Term Recovery Group

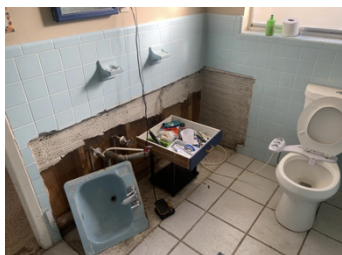
According to the National Voluntary Organizations Active in Disasters' Long Term Recovery Guide, "A long term recovery group (LTRG) is a cooperative body that is made up of representatives from faith-based, non-profit, government, business and other organizations working within a community to assist individuals and families as they recover from disaster. LTRGs are as varied in their structure as are the communities in which they work. The personality and operation of each group is unique and reflects local needs, available resources, cultural diversity, leadership style, and community support."

We gathered and empowered a team of concerned, expert neighborhood leaders and trained them on the roles and responsibilities of a community recovery effort, and we continue to advise this team weekly on case management, resource facilitation, and volunteer management and will continue to do so as funds allow.

Rebuilding & Renewal

Crisis Relief and Recovery has already sent a short-term rebuilding team to help vulnerable homeowners who do not have the means or the ability to rebuild for themselves. A team of CRR volunteers spent a week working and was able to start rebuilding in the community. The Courtney family in Jena is now able to move back into their functioning home—safe, dry, and ready to rebuild their lives again.

CRR is amazing. The people are friendly and caring. Don't know what we'd do without them.
John & Elaine



RIVER RUN REBUILD TRIP #1:

\$3923 of donated materials

338.5 Volunteer Hours

GETTING THE JOB DONE - BY THE NUMBERS



125 Homes Assessed



111 Cases Claimed



67 Cases Closed



1 Home Rebuilt

Total Value of Services Completed: **\$798,229**

CRR directly provides services and facilitates work by partnership with other organizations who use our damage assessments and work orders. Values assigned by CrisisCleanup.org and based on commercial value of closed work orders and volunteer hours.

The mission of Crisis Relief and Recovery (CRR) is to train, prepare, and deploy teams to serve and restore communities in crisis.

In disaster operations, our primary relief operations include:

- 1. Rapidly assess damage of a community in need*
- 2. Facilitate, coordinate, and bring resources to bear on the greatest needs*
- 3. Activate teams of volunteers to positively impact the community*

In long term recovery, our operations include:

- 1. Activate a leadership team with a plan for sustainable recovery*
- 2. Establish and sustain operations through the facilitation of volunteers, resources, & organizational direction*
- 3. Enable a community to recover and make "every place better" physically, emotionally, and spiritually.*